



# Lit Moon World Shakespeare Festival

## PRESS RELEASE

**PRESS CONTACT:** Julia McHugh 805 569-3303, juliapr@west.net  
**TICKETS:** Lobero Theatre Box Office, (805) 963-0761, www.lobero.com

**TICKETS NOW ON SALE**  
**BOLD, NONTRADITIONAL SHAKESPEARE STAGINGS,**  
**WORLD PREMIERES, INTERNATIONAL COLLABORATIONS**  
**AT 2008 LIT MOON WORLD SHAKESPEARE FESTIVAL**  
**OCTOBER 16 - 26, 2008 • SANTA BARBARA, CALIFORNIA**

**September 2, 2008, Santa Barbara, CA** – Tickets are now on sale for The Lit Moon World Shakespeare Festival, held October 16 through 26 at various Santa Barbara venues. The Festival is highlighted by fully-staged productions of Shakespeare's plays (many of them world premieres), including *Julius Caesar*, *The Winter's Tale*, and *Midsummer Night's Dream*, and adaptations of *Othello/Measure for Measure*, *The Tempest* (called *Blue Tempest*), and *King Lear* (called *Poor, Poor Lear*). The festival also includes related free panels and addresses, plus an art exhibit, music, and social events. (Schedule follows.)

Subscriptions for the entire six-play Festival are \$120 for adults and \$90 for students. "Choose Your Own" subscriptions of three to five plays are also available, offering 10% off single ticket prices. A Patron Pass, at \$300, includes admission to all plays, parties and events and includes a donation to the Lit Moon Theatre Company.

Single tickets are \$25 for adults and \$19 for students to all plays except *The Winter's Tale*, which is priced at \$16 for adults and \$10 for students.

Both subscription packages and single tickets are on sale at the Lobero Theatre Box Office, which is handling advance ticketing for all performances (regardless of venue), at [www.lobero.com](http://www.lobero.com), by phone at (805) 963-0761, or in person at 33 East Canon Perdido Street, Santa Barbara, CA, 93101.

### **ABOUT THE FESTIVAL**

The 2008 Festival presents artists from Bulgaria, Finland, Macedonia, and the European Republic of Georgia, which marks the first time that that country's flagship theatre, the Marjanishvili State Drama Theatre, has performed in the United States.

The festival also celebrates local, homegrown work from Santa Barbara, including area scholars and teachers, faculty and students from UCSB and Westmont College, and, of course, the Lit Moon Theatre Company.

“Ours is a multi-lingual, multi-cultural, multi-play, multi-venue celebration of plays written by an English actor over 400 years ago, which have now become the most produced plays on the planet,” says John Blondell, Lit Moon Artistic Director.

“Today, as Russian troops still occupy parts of Georgia,” he continues, “events on stage transcend simple entertainment and become acts of political necessity and responsibility, and watching a play in a darkened room can inspire new ways of knowing and understanding.”

It is the only festival of its kind in the United States, and one of only seven in the world. This festival celebrates the work of the world’s greatest playwright, showcases some of the world’s most exciting talents working with Shakespeare today, and provides exhilarating theatre for audiences. The hallmark of this festival are bold, original, nontraditional interpretations rooted in highly visual approaches to theatre.

The festival, held Biennially, had its debut in 2006 and was hailed as “the most ambitious dramatic festival ever mounted in Santa Barbara and one of the most broad-ranging festivals of Shakespeare produced anywhere,” by Charles Donelan of the *Santa Barbara Independent*, who continued, “Lit Moon’s preoccupation with the innovation of contemporary performance and practice is what makes the festival special and different.”

## **ABOUT LIT MOON THEATRE COMPANY**

The Lit Moon Theatre Company is a collective of theatre artists founded in Santa Barbara in 1991. Long regarded as Santa Barbara’s most innovative theatre company, Lit Moon is recognized both here and abroad for its visual, image-oriented brand of theatre. The company is an independent, laboratory theatre company that integrates aesthetic experimentation with cross-cultural interaction and understanding.

Since 1998, Lit Moon has created numerous residencies with artists from Russia, Hungary, Bulgaria, Poland, the Czech Republic, Finland, and Macedonia; presented seven Lit Moon World Theater Festivals; the 2006 Lit Moon World Shakespeare Festival; the Midnight Sun Festival; and toured to Poland, Bulgaria, the Czech Republic, Scotland, Canada, Macedonia, and Montenegro.



**“The company’s style, melding the rigors of physical theatre with classic text, makes them pioneers, if not unique.” -- *Montreal Gazette***

## 2008 LIT MOON WORLD SHAKESPEARE FESTIVAL



### ***Othello/Measure For Measure* – World Premiere**

**Westmont College/Lit Moon Theatre Co-production**

*Center Stage Theater; In English*

*Thursday, October 16 at 7 p.m.*

*Sunday, October 19 at 2 p.m.*

*Thursday, October 23 at 9 p.m.*

*Saturday, October 25 at 7 p.m.*

She's back! Notorious Bulgarian director Lilia Abadjieva, whose *Romeo and Juliet* (above) rocked the Lobero (and inspired ten-minute standing ovations), is back with another wild spectacle – a fusion of not one but two Shakespearean masterpieces – *Othello* and *Measure for Measure*. Don't miss this one-of-a-kind, all-male production, staged by one of Eastern Europe's most adventurous directors.

*\$25 adults / \$19 students*



### ***The Winter's Tale* – New Production**

**UCSB Department of Theatre and Dance**

*Center Stage Theater; In English*

*Friday, October 17 at 7 p.m.*

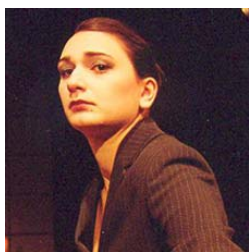
*Saturday, October 18 at 9 p.m.*

*Monday, October 20 at 7 p.m.*

*Saturday, October 25 at 2 p.m.*

Irwin Appel (above, Indie Award winner, *Timon of Athens*, 2006 Festival) showcases some of Santa Barbara's finest young actors in this rich, late period Romance. Appel's staging features Shakespeare's marvelous language, his compelling characters, and the ingenuity of the performers in this beautiful, bittersweet story of love, longing, and redemption.

*\$16 adults / \$10 students*



### ***Julius Caesar* – World Premiere**

**Lit Moon Theatre Company/Drama Theatre of Skopje, Macedonia/Westmont College Co-production**

*Center Stage Theater; In English & Macedonian with English supertitles*

*Saturday, October 18 at 7 p.m.*

*Sunday, October 19 at 4 p.m.*

*Thursday, October 23 at 7 p.m.*

*Saturday, October 25 at 9 p.m.*

In a beguiling complement to Lilia Abadjieva's all-male *Othello/Measure for Measure* production, John Blondell's cast of a dozen Macedonian (Skopje Drama Theatre) and American (Lit Moon and Westmont College) women offers a potentially fresh vision of Shakespeare's great political tragedy.

*\$25 adults / \$19 students*

[\(more\)](#)



***A Midsummer Night's Dream – U.S. Premiere***

**Marjanishvili State Drama Theatre; Tbilisi, European Republic of Georgia**

***Co-presented by UCSB Arts & Lectures & Lit Moon World Shakespeare Festival***

*Lobero Theatre; In Georgian, with English subtitles*

*Tuesday, October 21 at 7 p.m.*

*Wednesday, October 22 at 7 p.m.*

In their 80-year history, the storied Georgian State Theatre has never visited the United States – until now. Shakespeare's wildly popular comic fantasy takes on tremendous resonance when Artistic Director Levan Tsuladze resets the play in a small Georgian town. Don't miss this rare and wonderful occasion – one of Europe's truly great companies in a warm, joyous staging of a truly great comedy.  
\$25 adults / \$19 students



***Blue Tempest – New Production***

**Lit Moon Theatre Company**

*Porter Theater, Westmont College; In English*

*Friday, October 24 at 7 p.m.*

*Sunday, October 26 at 4 p.m.*

Lit Moon staged *The Tempest* for the 2006 festival and subsequently toured to festivals in Montenegro and Macedonia. In truly Lit Moon fashion, the company creates *an entirely new production* for 2008, inspired by banjo playing, silent movies, domestic squabbles, and the color blue.  
\$25 adults / \$19 students



***Poor, Poor Lear – Santa Barbara Premiere***

**Nina Sallinen, Native of Finland**

*Porter Theater, Westmont College; In English*

*Friday, October 24 at 9 p.m.*

*Sunday, October 26 at 2 p.m.*

In this strikingly original dark comedy, Finnish actress Nina Sallinen portrays a 90 year-old theatrical *grande dame* who brazenly chooses *King Lear* for her farewell performance. The aging actress unintentionally highlights her own life story while gradually becoming cognizant of the parallels between her life and Lear's. A stunning *tour de force* performance!  
\$25 adults / \$19 students

[\(more\)](#)



### Special Concert!

## Big World Shakespeare Jam & Cabaret

Sunday, October 19, 7 p.m.

Center Stage Theater

Artists from the Marjanishvili State Drama Theatre, the Firebird Quartet (Los Angeles via Ukraine), the Drama Theatre of Skopje, the Gove County String Quartet and the Lit Moon Theatre Company in a fabulously eclectic evening of world music, past and present.

\$16 adults/\$10 students

## FREE EVENTS

### Meet the Artists

Sunday, October 19, 3 p.m.

Center Stage Theater

Refreshments, merriment, and conversation to welcome Festival special guests from Bulgaria, Finland, the Republic of Georgia, and Macedonia.

*Followed by performance of Julius Caesar. Free*

### **Shaping Fantasies – Art Exhibit**

Opening Reception Tuesday, October 21, 5 p.m.

Lobero Theatre Rehearsal Hall & Patio

A fascinating peek into the visual cultures of Eastern Europe in this showcase of work by painters and theatre designers from Macedonia, Georgia, and Bulgaria. *Free*

### **New time & location: Theatre in the Republic of Georgia**

Wednesday, October 22, 2 p.m.

UCSB Hatlen Theatre ; *In Georgian and English, with English translation*

Levan Tsuladze, one of Eastern Europe's most esteemed directors and the artistic director of the Marjanishvili State Drama Theatre (Tbilisi), discusses traditional and contemporary theatre in the Georgian Republic. *Free*

### **The Theatre of Lilia Abadjieva**

Thursday, October 23, 4 p.m.

Center Stage Theater; *In English*

An informal discussion about the bold works and creative process of one of Eastern Europe's most provocative theatre artists, moderated by John Blondell. Features video clips from notable productions. *Free*

### **Theatre in Macedonia**

Friday, October 24, 4:30 p.m.

Porter Theatre, Westmont College; *In Macedonian & English, with English translation*

Prevailing trends in Macedonian theatre, its rich theatrical heritage and varied past are discussed by artists from Skopje's Young Open Theatre Festival, Skopje Drama Theatre, and Bitola National Theatre. *Followed by light supper and conversation. Free*

###

## CHRONOLOGICAL LISTINGS

### Thursday, October 16, 7 p.m.

WORLD PREMIERE

Lit Moon World Shakespeare Festival presents

**BULGARIAN/U.S. PRODUCTION OF *OTHELLO/MEASURE FOR MEASURE***

All-male staging from notorious Bulgarian director Lilia Abadjieva. In English.

\$25 adults/\$19 students

Center Stage Theater, 2nd floor, Paseo Nuevo

963-0761, [www.litmoon.com](http://www.litmoon.com)

### Friday, October 17, 7 p.m.

Lit Moon World Shakespeare Festival presents

**UCSB THEATER IN *THE WINTER'S TALE***

Shakespeare's words shine in new production by UCSB Department of Theater and Dance.

In English.

\$16 adults/\$10 students

Center Stage Theater, 2nd floor, Paseo Nuevo

963-0761, [www.litmoon.com](http://www.litmoon.com)

### Saturday, October 18, 7 p.m.

WORLD PREMIERE

Lit Moon World Shakespeare Festival presents

**MACEDONIAN/U.S. PRODUCTION OF *JULIUS CAESAR***

All-woman cast in sizzling staging by John Blondell. In English & Macedonian with English supertitles.

\$25 adults/\$19 students

Center Stage Theater, 2nd floor, Paseo Nuevo

963-0761, [www.litmoon.com](http://www.litmoon.com)

### Saturday, October 18, 9 p.m.

Lit Moon World Shakespeare Festival presents

**UCSB THEATER IN *THE WINTER'S TALE***

Shakespeare's words shine in new production by UCSB Department of Theater and Dance.

In English.

\$16 adults/\$10 students

Center Stage Theater, 2nd floor, Paseo Nuevo

963-0761, [www.litmoon.com](http://www.litmoon.com)

### Sunday, October 19, 2 p.m.

Lit Moon World Shakespeare Festival presents

**BULGARIAN/U.S. PRODUCTION OF *OTHELLO/MEASURE FOR MEASURE***

All-male staging from notorious Bulgarian director Lilia Abadjieva. In English.

\$25 adults/\$19 students

Center Stage Theater, 2nd floor, Paseo Nuevo

963-0761, [www.litmoon.com](http://www.litmoon.com)

[\(more\)](#)

**Sunday, October 19, 3 p.m.**

FREE!

Lit Moon World Shakespeare Festival presents

**MEET THE ARTISTS**

Welcome Festival guests from Bulgaria, Finland, the Republic of Georgia, and Macedonia.

Followed by *Julius Caesar*.

Free

Center Stage Theater, 2nd floor, Paseo Nuevo

963-0761, [www.litmoon.com](http://www.litmoon.com)

**Sunday, October 19, 4 p.m.**

Lit Moon World Shakespeare Festival presents

**MACEDONIAN/U.S. PRODUCTION OF *JULIUS CAESAR***

All-woman cast in sizzling staging by John Blondell. In English & Macedonian with English supertitles.

\$25 adults/\$19 students

Center Stage Theater, 2nd floor, Paseo Nuevo

963-0761, [www.litmoon.com](http://www.litmoon.com)

**Sunday, October 19, 7 p.m.**

Lit Moon World Shakespeare Festival presents

**“BIG WORLD SHAKESPEARE JAM & CABARET”**

World music, past and present featuring Marjanishvili State Drama Theatre, Firebird Quartet, Drama Theatre of Skopje, Gove County String Quartet and the Lit Moon Theatre Company.

\$16 adults/\$10 students

Center Stage Theater, 2nd floor, Paseo Nuevo

963-0761, [www.litmoon.com](http://www.litmoon.com)

**Monday, October 20, 7 p.m.**

Lit Moon World Shakespeare Festival presents

**BULGARIAN/U.S. PRODUCTION OF *OTHELLO/MEASURE FOR MEASURE***

All-male staging from notorious Bulgarian director Lilia Abadjieva. In English.

\$25 adults/\$19 students

Center Stage Theater, 2nd floor, Paseo Nuevo

963-0761, [www.litmoon.com](http://www.litmoon.com)

**Tuesday, October 21, 5 p.m.**

ART OPENING

Lit Moon World Shakespeare Festival presents

**“SHAPING FANTASIES”**

Opening Reception.

Work by painters and theatre designers from Macedonia, Georgia, and Bulgaria

Free

Lobero Theatre Rehearsal Hall & Patio

[www.litmoon.com](http://www.litmoon.com)

(more)

**Tuesday, October 21, 7 p.m.**

FIRST U.S. PERFORMANCES

Lit Moon World Shakespeare Festival and UCSB Arts & Lectures present

**GEORGIAN STATE THEATRE IN *A MIDSUMMER NIGHT'S DREAM***

First-ever U.S. performances by celebrated company. In Georgian, with English subtitles.

\$25 adults/\$19 students

Lobero Theatre

963-0761, [www.litmoon.com](http://www.litmoon.com)

**Wednesday, October 22, 2 p.m.**

FREE LECTURE

Lit Moon World Shakespeare Festival and UCSB Arts & Lectures present

**“THEATRE IN THE REPUBLIC OF GEORGIA”**

John Blondell in conversation with Georgian State Theatre Artistic Director Levan Tsuladze.

English translation provided.

Free.

Hatlen Theatre, UCSB

[www.litmoon.com](http://www.litmoon.com)

**Wednesday, October 22, 7 p.m.**

FIRST U.S. PERFORMANCES

Lit Moon World Shakespeare Festival and UCSB Arts & Lectures present

**GEORGIAN STATE THEATRE IN *A MIDSUMMER NIGHT'S DREAM***

First-ever U.S. performances by celebrated company. In Georgian, with English subtitles.

\$25 adults/\$19 students

Lobero Theatre

963-0761, [www.litmoon.com](http://www.litmoon.com)

**Thursday, October 23, 4 p.m.**

FREE LECTURE

Lit Moon World Shakespeare Festival presents

**“THE THEATRE OF LILIA ABADJIEVA”**

John Blondell in discussion with one of Eastern Europe’s most provocative theatre artists.

Video clips. In English.

Free

Center Stage Theater, 2nd floor, Paseo Nuevo

[www.litmoon.com](http://www.litmoon.com)

**Thursday, October 23, 7 p.m.**

Lit Moon World Shakespeare Festival presents

**MACEDONIAN/U.S. PRODUCTION OF *JULIUS CAESAR***

All-woman cast in sizzling staging by John Blondell. In English & Macedonian with English supertitles.

\$25 adults/\$19 students

Center Stage Theater, 2nd floor, Paseo Nuevo

963-0761, [www.litmoon.com](http://www.litmoon.com)

(more)

**Thursday, October 23, 9 p.m.**

Lit Moon World Shakespeare Festival presents

**BULGARIAN/U.S. PRODUCTION OF *OTHELLO/MEASURE FOR MEASURE***

All-male staging from notorious Bulgarian director Lilia Abadjieva. In English.

\$25 adults/\$19 students

Center Stage Theater, 2nd floor, Paseo Nuevo

963-0761, [www.litmoon.com](http://www.litmoon.com)

**Friday, October 24, 4 p.m.**

FREE LECTURE

Lit Moon World Shakespeare Festival presents

**“THEATRE IN MACEDONIA”**

Artists from Skopje’s Young Open Theatre Festival & Drama Theatre, and Bitola National Theatre.

English translation provided.

Free

Porter Theatre, Westmont College

[www.litmoon.com](http://www.litmoon.com)

**Friday, October 24, 7 p.m.**

NEW PRODUCTION

Lit Moon World Shakespeare Festival presents

**LIT MOON IN *BLUE TEMPEST***

New staging by Lit Moon inspired by the color blue. Directed by John Blondell. In English.

\$25 adults/\$19 students

Porter Theater, Westmont College

963-0761, [www.litmoon.com](http://www.litmoon.com)

**Friday, October 24, 9 p.m.**

LOCAL PREMIERE

Lit Moon World Shakespeare Festival presents

**FINLAND’S NINA SALLINEN IN *POOR, POOR LEAR***

Tour de force one-woman show as aging Finish actress in farewell “King Lear.”

In English.

\$25 adults/\$19 students

Porter Theater, Westmont College

963-0761, [www.litmoon.com](http://www.litmoon.com)

**Saturday, October 25, 2 p.m.**

Lit Moon World Shakespeare Festival presents

**UCSB THEATER IN *THE WINTER’S TALE***

Shakespeare’s words shine in new production by UCSB Department of Theater and Dance.

In English.

\$16 adults/\$10 students

Center Stage Theater, 2nd floor, Paseo Nuevo

963-0761, [www.litmoon.com](http://www.litmoon.com)

(more)

**Saturday, October 25, 7 p.m.**

Lit Moon World Shakespeare Festival presents

**BULGARIAN/U.S. PRODUCTION OF *OTHELLO/MEASURE FOR MEASURE***

All-male staging from notorious Bulgarian director Lilia Abadjieva. In English.

\$25 adults/\$19 students

Center Stage Theater, 2nd floor, Paseo Nuevo

963-0761, [www.litmoon.com](http://www.litmoon.com)

**Saturday, October 25, 9 p.m.**

Lit Moon World Shakespeare Festival presents

**MACEDONIAN/U.S. PRODUCTION OF *JULIUS CAESAR***

All-woman cast in sizzling staging by John Blondell. In English & Macedonian with English supertitles.

\$25 adults/\$19 students

Center Stage Theater, 2nd floor, Paseo Nuevo

963-0761, [www.litmoon.com](http://www.litmoon.com)

**Sunday, October 26, 2 p.m.**

Lit Moon World Shakespeare Festival presents

**FINLAND'S NINA SALLINEN IN *POOR, POOR LEAR***

Tour de force one-woman show as aging Finish actress in farewell "King Lear."

In English.

\$25 adults/\$19 students

Porter Theater, Westmont College

963-0761, [www.litmoon.com](http://www.litmoon.com)

**Sunday, October 26, 4 p.m.**

NEW PRODUCTION

Lit Moon World Shakespeare Festival presents

**LIT MOON IN *BLUE TEMPEST***

New staging by Lit Moon inspired by the color blue. Directed by John Blondell. In English.

\$25 adults/\$19 students

Porter Theater, Westmont College

963-0761, [www.litmoon.com](http://www.litmoon.com)

###